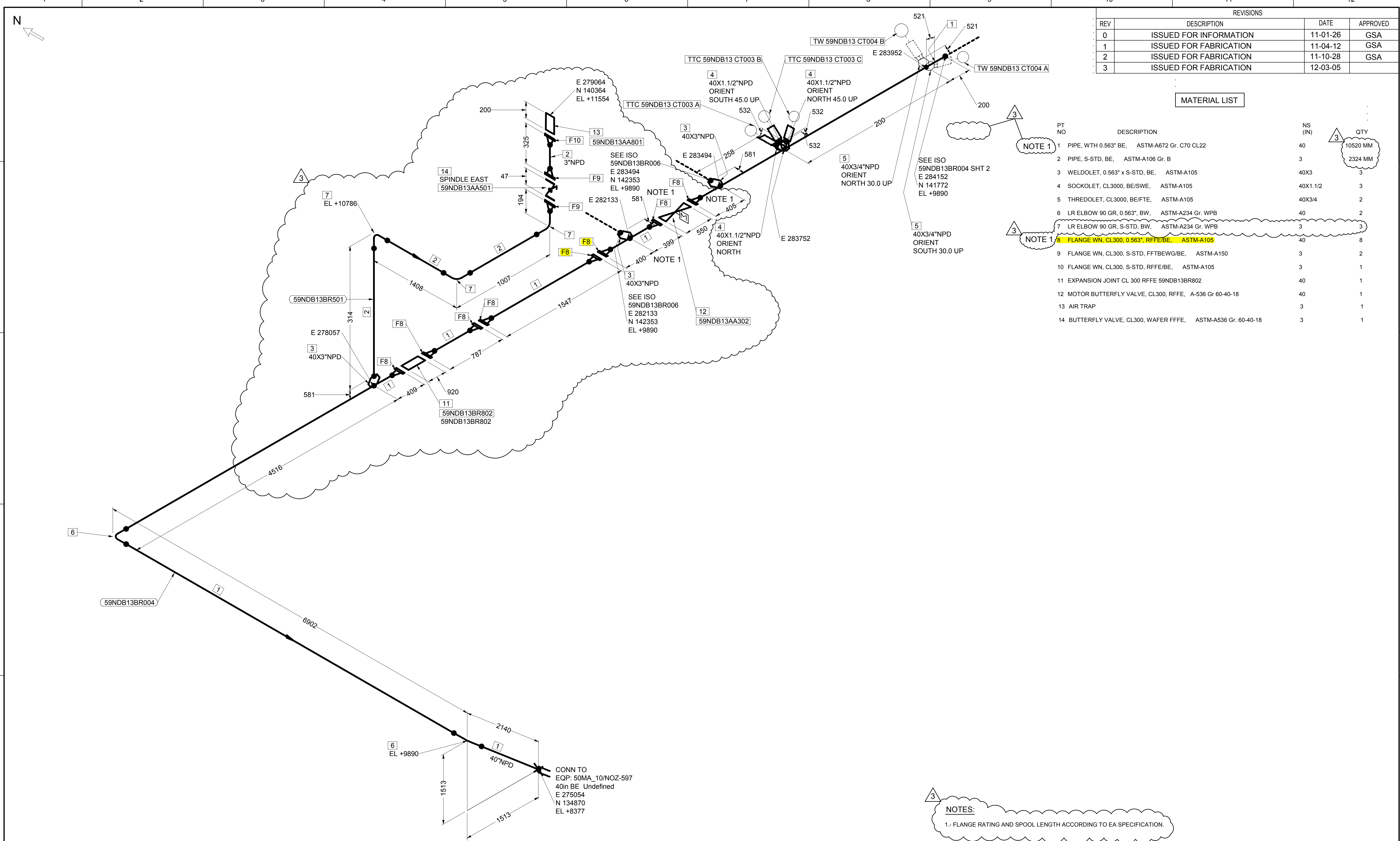


444-59-D-J-NDB13BR004







| | | | |
|---------------------------------------|---|-------|------------------------|
| WELDING SPECIFICATION | INSULATION SPECIFICATION | | REFERENCE P&ID |
| 444-59-YM_MIP-EA_24121 | 444-59-YM_MIP-EA_24900 | | 444-59-ND_MDD-EA_10450 |
| THERMAL PROCESSING & DESTRUCTIVE TEST | INSULATION TYPE | AH | REFERENCE DRAWINGS |
| 444-59-YM_MIP-EA_24121 | INSULATION THICKNESS | 40 mm | |
| NON DESTRUCTIVE TEST | PAINTING SPECIFICATION / PIPING IDENT. CRITERIA | | |
| BW / SW / BRANCH / HTNDE / OTHER | 444-59-VV_MIP-EA_27700/ 444-59-YM_MR_EA_00420 | | |
| PRESSURE TEST: | SYSTEM & CODE | CS-HI | LINE IDENTIFICATION |
| 24 barg | | | 59NDB13BR004 |

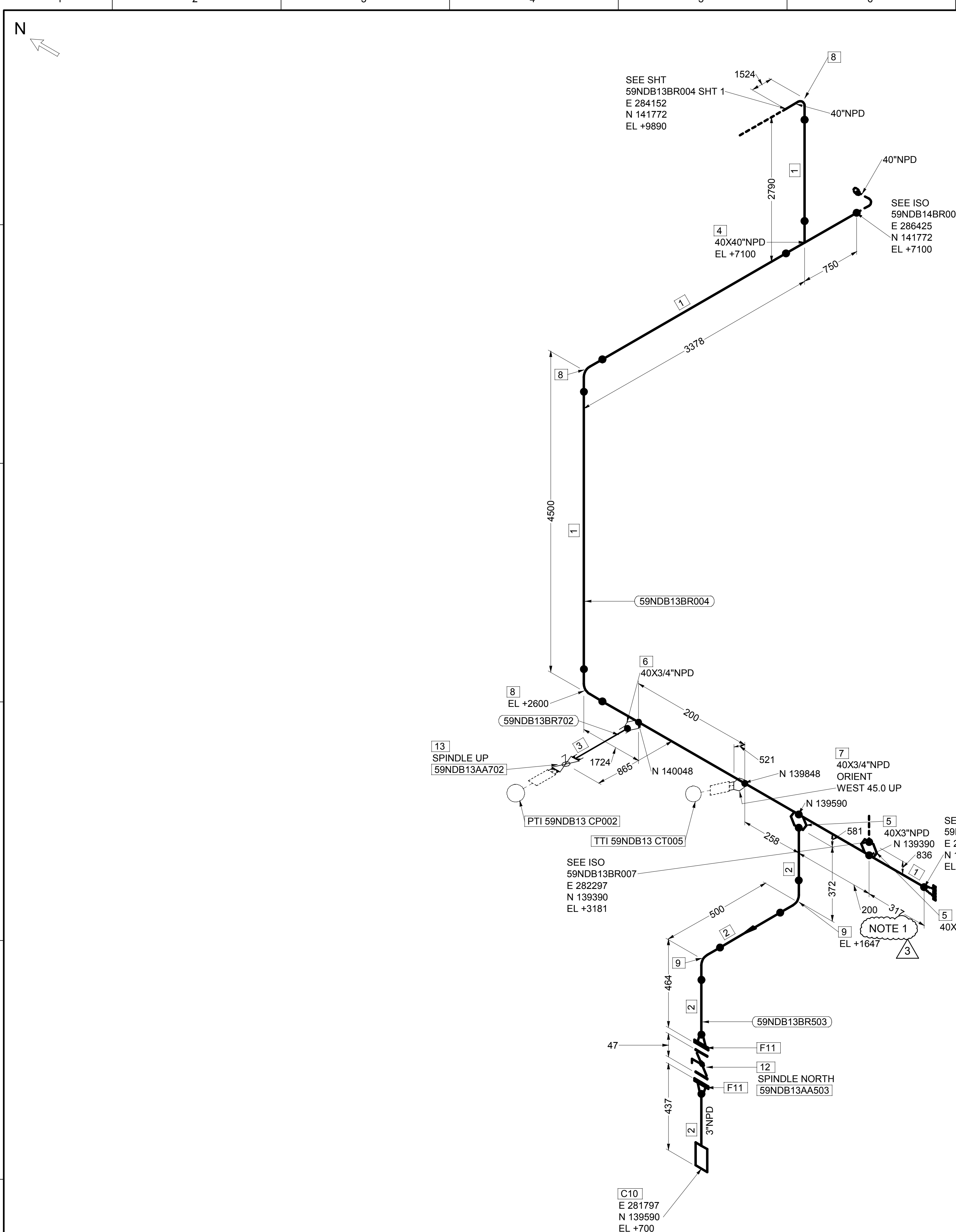
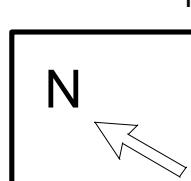
| LINE IDENTIFICATION | NP | Piping | Insul. | D.Pres. | D.Temp. | O.Pres. | O.Temp. | Fluid |
|---------------------|----|---------|--------|---------|---------|---------|---------|-----------|
| (Piperun) | in | MatSpec | Spec. | barg | °C | bara | °C | |
| 59NDB13BR004 | 40 | BA1b | AH | 16,0 | 150,0 | | | Water |
| 59NDB13BR501 | 3 | BA1b | AH | 16,0 | 150,0 | | | Air-Water |

PROPRIETARY INFORMATION
This document contains proprietary information of Empresarios Agrupados Internacional,S.A. and is to be used solely for the Project and the purpose for which it is furnished. It may not be disclosed to others for a different use without the written permission of UTE Ingenieria CTCC de RIGA II

CONTAINS INFORMATION FOR THE DESIGN OF STRUCTURES
SYSTEM OR COMPONENTS YES ☒ NO ☐
VERIFICATION: N/A ☐ SUP. ☒ VERIFIER L1 ☐ L2 ☐

| | | |
|---|--|--|
| Designer:  EMPRESARIOS AGRUPADOS | Owner:  Latvenergo | EPC Contractor:  GAMA POWER SYSTEMS |
| EA DWG No. 444-59-D-J-NDB13BR004 | Owner's Engineer:  AF-Colenco Ltd | PROJECT Riga TPP-2 Reconstruction Project Second Unit "GAMA Project No. P0807" |
| PREPARED RAP REVIEWED FSD | KKS DWG No. 444-59-NDB-JDI-EA_-13-004 | DIN A1 SCALE NONE SHEET 1 OF 2 |

444-59-D-J-NDB13BR004



| REVISIONS | | | |
|-----------|------------------------|----------|----------|
| REV | DESCRIPTION | DATE | APPROVED |
| 0 | ISSUED FOR INFORMATION | 11-01-26 | GSA |
| 1 | ISSUED FOR FABRICATION | 11-04-12 | GSA |
| 2 | ISSUED FOR FABRICATION | 11-10-28 | GSA |
| 3 | ISSUED FOR FABRICATION | 12-03-05 | |

MATERIAL LIST

| PT NO | DESCRIPTION | NS (IN) | QTY |
|-------|---|---------|---------|
| 1 | PIPE, WTH 0.563" BE, ASTM-A672 Gr. C70 CL22 | 40 | 4250 MM |
| 2 | PIPE, S-STD, BE, ASTM-A106 Gr. B | 3 | 1055 MM |
| 3 | PIPE, S-80, PE, ASTM-A106 Gr. B | 3/4 | 300 MM |
| 4 | TEE, 0.563", BE, ASTM-A234 Gr. WPB | 40X40 | 1 |
| 5 | Weldolet, 0.563" x S-STD, BE, ASTM-A105 | 40X3 | 2 |
| 6 | SOCKOLET, CL3000, BE/SWE, ASTM-A105 | 40X3/4 | 1 |
| 7 | THREDOLET, CL3000, BE/FTE, ASTM-A105 | 40X3/4 | 1 |
| 8 | LR ELBOW 90 GR, 0.563", BW, ASTM-A234 Gr. WPB | 40 | 3 |
| 9 | LR ELBOW 90 GR, S-STD, BW, ASTM-A234 Gr. WPB | 3 | 2 |
| 10 | HOSE CONNECTION FTE | 3 | 1 |
| 11 | FLANGE WN, CL300, S-STD, FFTBEWG/BE, ASTM-A150 | 3 | 2 |
| 12 | BUTTERFLY VALVE, CL300, WAFFER FFFE, ASTM-A536 Gr. 60-40-18 | 3 | 1 |
| 13 | BALL VALVE, CL600, FTE, ASTM-A105 | 3/4 | 1 |

NOTE 1

NOTE 1

NOTES:
1.- FLANGE RATING AND SPOOL LENGTH ACCORDING TO EA SPECIFICATION.

| | | | |
|---------------------------------------|---|-------|------------------------|
| WELDING SPECIFICATION | INSULATION SPECIFICATION | | REFERENCE P&ID |
| 444-59-YM_MIP-EA_24121 | 444-59-YM_MIP-EA_24900 | | 444-59-ND_MDD-EA_10450 |
| THERMAL PROCESSING & DESTRUCTIVE TEST | INSULATION TYPE | AH | REFERENCE DRAWINGS |
| 444-59-YM_MIP-EA_24121 | INSULATION THICKNESS | 40 mm | |
| NON DESTRUCTIVE TEST | PAINTING SPECIFICATION / PIPING IDENT. CRITERIA | | |
| BW / SW / BRANCH / HTNDE / OTHER | 444-59-VV_MIP-EA_27700/ 444-59-YM_MR_EA_00420 | | |
| PRESSURE TEST: | SYSTEM & CODE | CS-HI | LINE IDENTIFICATION |
| 24 barg | | | 59NDB13BR004 |

| LINE IDENTIFICATION (Piperun) | NPD in | Piping MatSpec | Insul. Spec. | D.Pres. barg | D.Temp. °C | O.Pres. bara | O.Temp. °C | Fluid |
|-------------------------------|--------|----------------|--------------|--------------|------------|--------------|------------|-------|
| 59NDB13BR004 | 40 | BA1b | AH | 16.0 | 150.0 | | | Water |
| 59NDB13BR503 | 3 | BA1b | AH | 16.0 | 150.0 | | | Water |

PROPRIETARY INFORMATION

This document contains proprietary information of Empresarios Agrupados Internacional S.A. and is to be used solely for the Project and the purpose for which it is furnished. It may not be disclosed to others for a different use without the written permission of UTE Ingenieria CTCC de RIGA II

CONTAINS INFORMATION FOR THE DESIGN OF STRUCTURES
SYSTEM OR COMPONENTS YES ☒ NO ☐
VERIFICATION: N/A ☐ SUP. ☒ VERIFIER L1 ☐ L2 ☐

| | | |
|--|--|--|
| Designer: EMPRESARIOS AGRUPADOS | Owner: Latvenergo | EPC Contractor: GAMA POWER SYSTEMS |
| EA DWG No. 444-59-D-J-NDB13BR004 | Owner's Engineer: AF-Colenco Ltd | PROJECT Riga TPP-2 Reconstruction Project Second Unit "GAMA Project No. P0807" |
| PREPARED RAP REVIEWED FSD | KKS DWG No. 444-59-NDB-JDI-EA_-13-004 | DIN A1 SCALE NONE SHEET 2 OF 2 |